

New Beijing Poly Plaza

Dongcheng District, Beijing, China

Size 100,000sm in 24 floors

Completed 2007



The dramatic atrium faces the prominent Second Ring Road and the company's existing headquarters beyond.

The New Beijing Poly client sought to create a new landmark headquarters complex that, through its quality and mix of public and commercial uses, would establish a civic presence in Beijing and symbolize the company's public mission.

The program includes the client's headquarters, leasable office space, retail, restaurants, and the Museum, which houses one of the country's most important collections of antique bronzes and Buddhas.

The building's simple, monolithic triangular form responds to its location on a prominent intersection along Second Ring Road, near the Forbidden City. The form is based on an L-shaped floor plan that cradles a dramatic atrium.



Travertine brise-soleil shades floor to ceiling glass on the south and west sides.

CONCEPT EVOLUTION



CONVENTIONAL OFFICE FORM

Combined with Beijing's building setback requirements often yields isolated objects surrounded by inaccessible leftover spaces. Conventional form with a center core and perimeter offices results in diminishing access to daylight for spaces closer to the core.



SLAB OFFICE FORM

May be positioned on a site edge to begin to define a usable public space. The wall effect, however, blocks light and views. An offset core and thinner floor plate allow much of the office space to receive daylight from two directions, providing greater access to light and air for occupants.



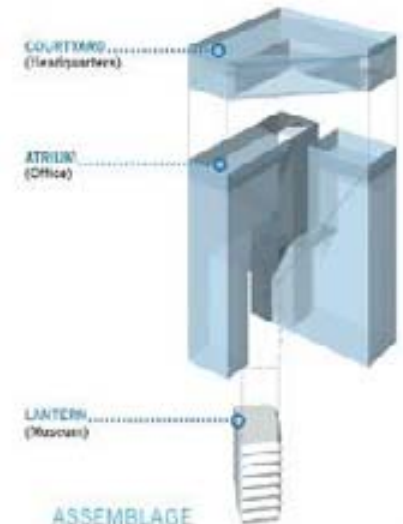
SPLIT SLAB

The slab form is split and pulled apart to create slot openings to allow daylight, views and public passage through.



FOLDED SLAB

By folding the slab, a public corner space is defined. This responds to the unique site; occupants have views of each other across the open space; and the slot openings bring light in from two different directions (south and west).



ASSEMBLAGE

The two unique program components—China Poly's headquarters offices and the Poly Museum—are contained within distinct forms. The headquarters occupy two floors wrapping a three-sided exterior garden courtyard. This provides these spaces with external views as well as a focal point for the organization. The museum is expressed as a precious glowing jewel suspended in the atrium.



The suspended "lantern" houses the Poly Museum and its collection of antique bronzes and Buddhas.

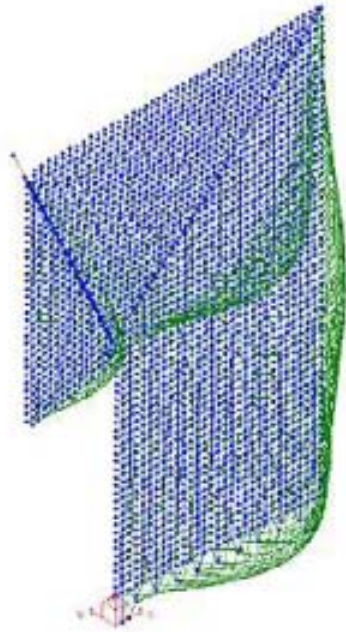
The integration of architecture and engineering is expressed most strongly in the dramatic wall enclosing the main atrium, which is one of the largest such enclosures in the world, roughly four times the size of the cable-net wall at New York's Time Warner Center.

To support the glass wall as a single plane conventionally would have required bulky trusses that would have disrupted the sense of transparency. Instead, a cable-net wall, providing a heightened sense of connection between the atrium and the city, is folded and stabilized by a formidable V-cable, which is counterweighted by the suspended lantern-like museum.

The V-cable is attached to the lantern using a specially designed rocker mechanism that allows the main cable to compensate for movement during a seismic event, giving more or less slack to accommodate displacement. Folding the cable-net wall over the V-cable reduces the deflection caused by high winds—and therefore the heft of the supporting cables—while adding a faceted dimension to the enclosure.



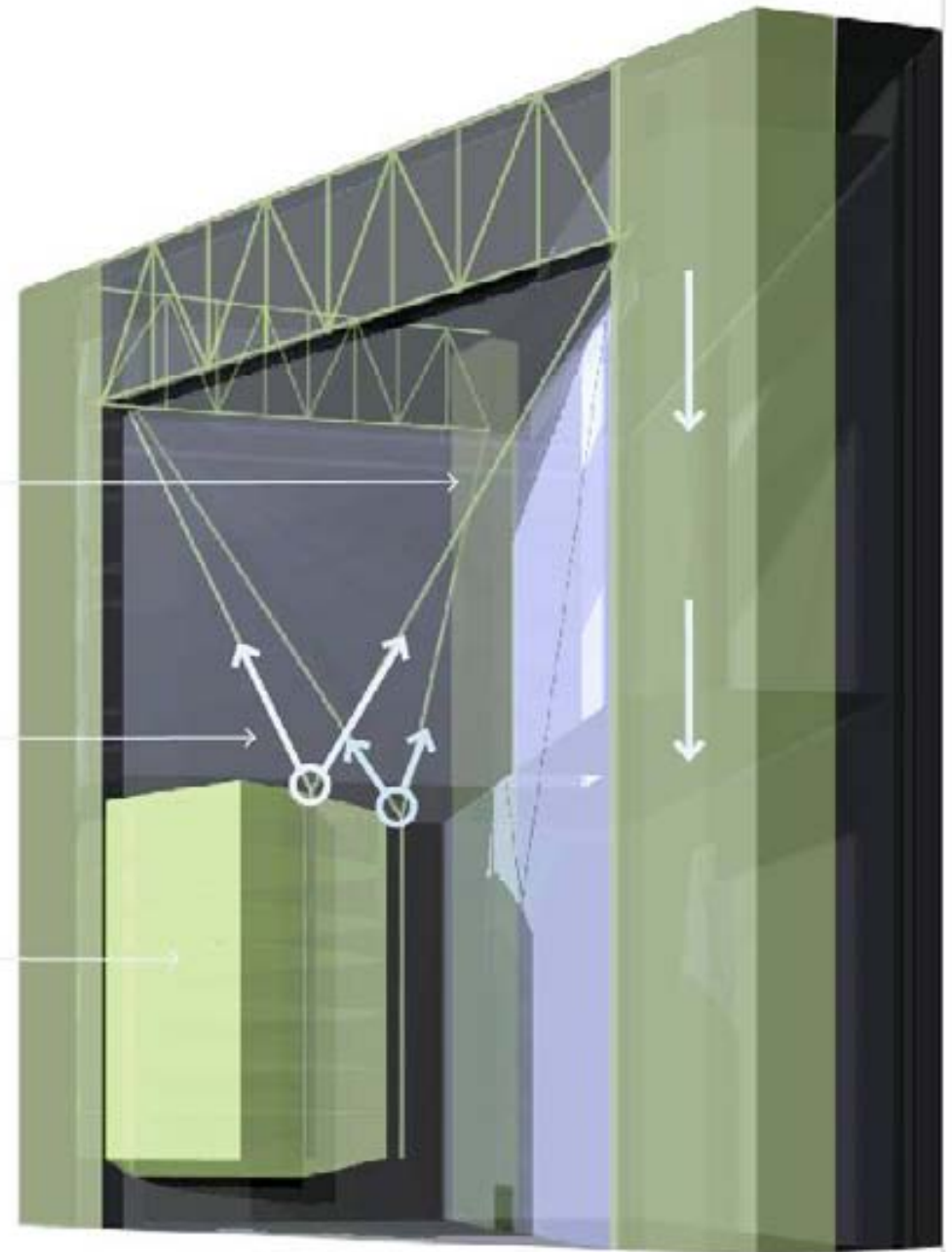
Public gathering space atop the lantern provides visitors with close proximity to the view.



Tension Cable Net

'Rocker' allows for movement

Suspended 'Lantern' as counterweight





The triangular shape minimizes the perimeter surface exposed to the elements, while the interior atrium draws daylight into office areas.



This unique 'Window on the City' was made possible through close collaboration.



The L-shaped floor plan aligns with the surrounding grid and cradles a dramatic atrium.

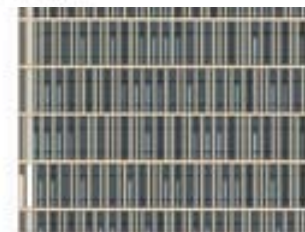




The south aperture is anchored by a 50-meter-tall architectural bronze wall that echoes the material of the museum's collection while highlighting the ceremonial entry into the building



March 21/September 21 三月二十一日から九月二十一日
08:00 上午八時



March 21/September 21 三月二十一日から九月二十一日
10:00 上午十時



March 21/September 21 三月二十一日から九月二十一日
12:00 中午十二時



March 21/September 21 三月二十一日から九月二十一日
14:00 下午二時



March 21/September 21 三月二十一日から九月二十一日
16:00 下午四時



